




## I. Preparation

- Install Ring Reader Driver.
- Ensure that the time zone on your computer is set correctly.
- Determine whether a computer is running a 32-bit version or 64 bit version of the Windows operating system.

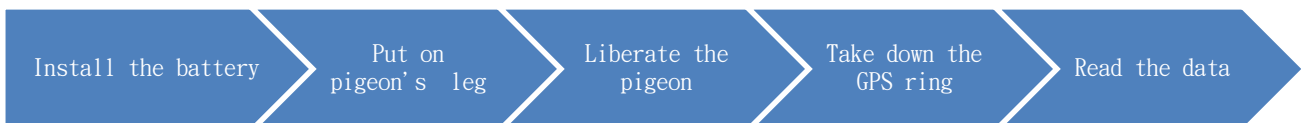
**Win7:** Click on “start” button  → right-click on “computer” → Click on “Properties”, it appears for the System type under “System”.

**Win10:** Click on “start” button  → click on “Setting”  → Click on “System” → click on “About”, it appears for the System type under “About”.

- ! The flight path records will save in the clouds, please make sure that computer has network connectivity, otherwise the software cannot be opened.
- ! Change the filename of Main program, it must cannot contain the character, for example: \* | \ : " < > ? / ( ) ...etc. Or the software will have abnormal situation.
- ! If you want to use SKL V2.0 on others computer. Please download the software from compressed file which was Original Equipment Manufacturer provided.

## II. GPS ring procedure

### 1 Start recording instantly



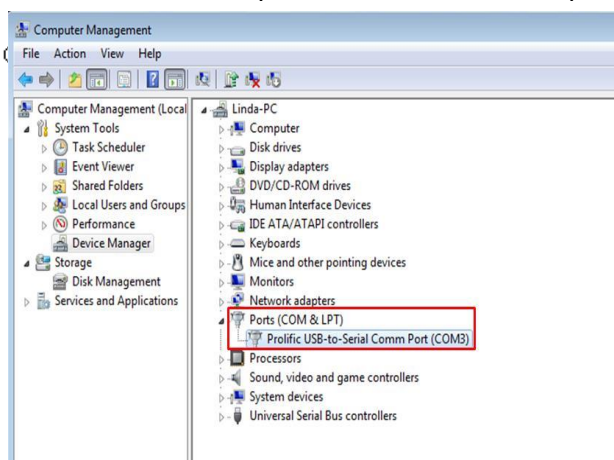
### 2 Departure time set



## III. Set the Departure Time

- Choose the Com Port

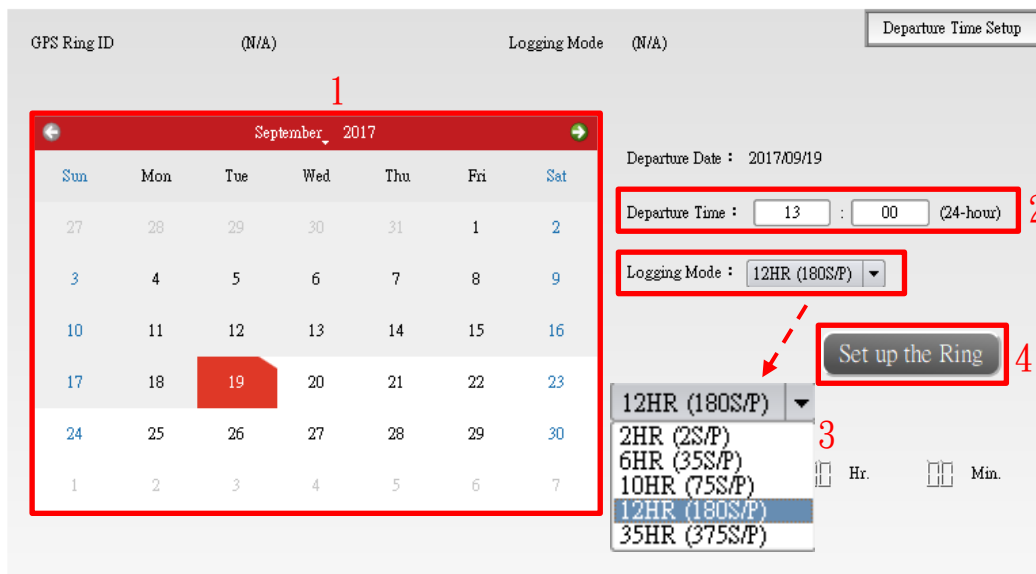
Find out the com port that has been set up from Device Manager.



ComPort: COM3 ▼

Read the Ring

- Set the Departure Date & Time
  - 1 Choose the departure date.
  - 2 Enter the departure time.
  - 3 Choose the logging mode.
  - 4 Click on “Set up the Ring” button.



! “Departure Time Setup Successfully” will show on the lower right corner, and the GPS ring will shut off instantly until time’s up.

- How to choose the logging mode
  - 1 Flying around the loft : 2HR < 2 S/P >
  - 2 Long Distance : 6HR < 35 S/P > 、 10HR < 75 S/P > 、 12HR < 180 S/P >
  - 3 Marathon < over 12HR > : 35HR < 375 S/P >

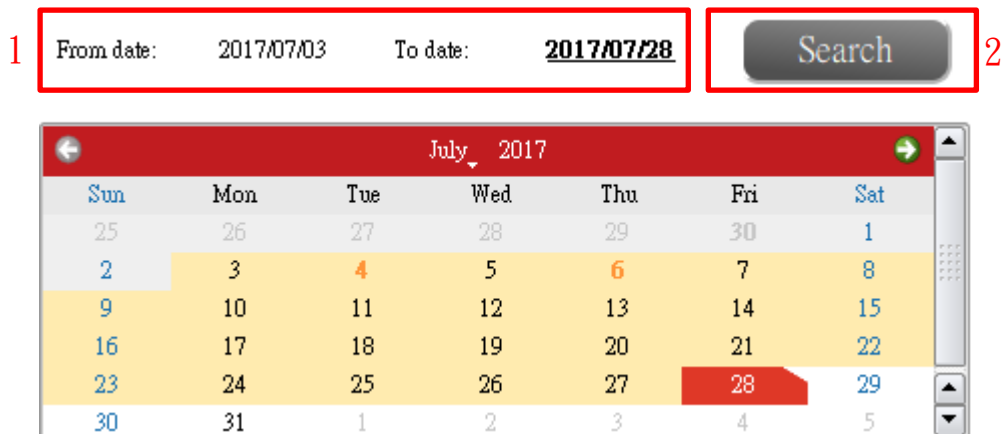
! The GPS ring’s record will be deleted when you click on “Setup the Ring” button.

! Don’t remove the battery after you set the departure time. Or you have to reset the departure time.

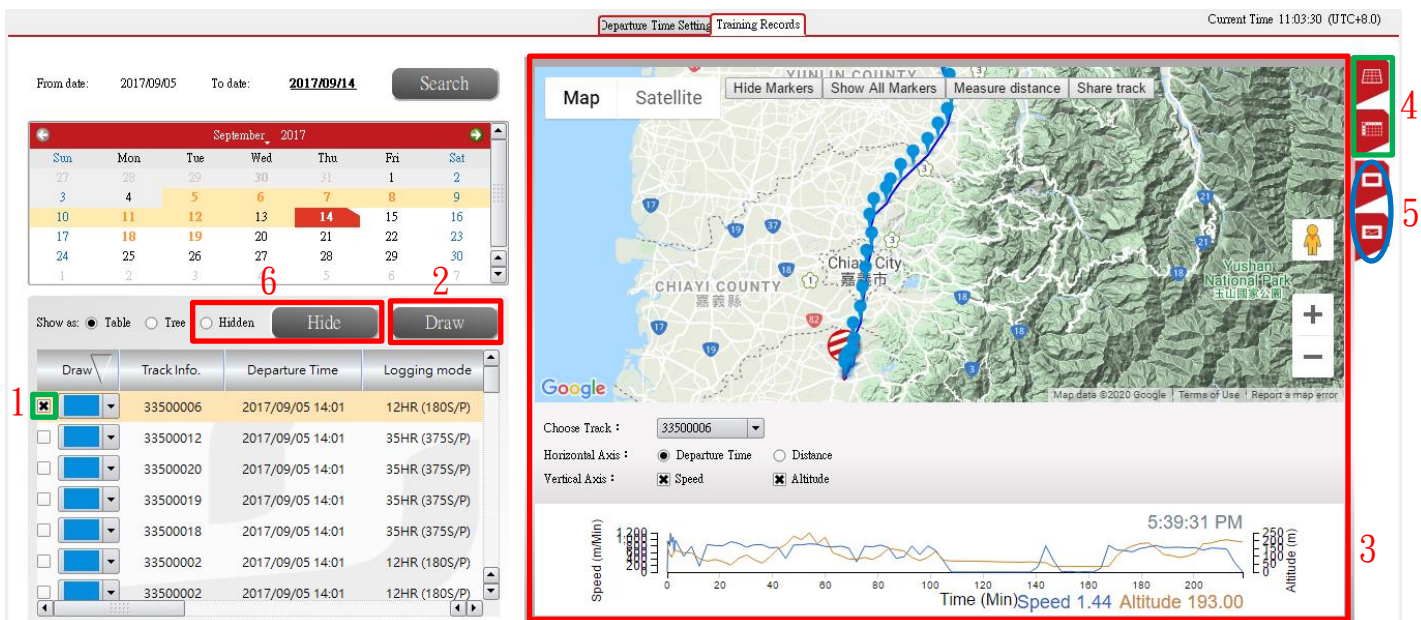
- Track reading
  - 1 Take off the GPS ring after training process is finished.
  - 2 Put the GPS ring on the ring reader and the second light flashes (blue light).
  - 3 Choose the com port, click on “Read the Ring” button and wait for progress bar complete.
  - 4 The GPS ring’s record will be deleted after track reading.
  - 5 “Reading completed!” will show on the lower right corner and the flight path record will show on the right side.
  - 6 The flight path record saved into the page of “Training Records” after read the data successfully.

#### IV. Training Records

- Search the history records
  - 1 Choose the history training records that you want to search.
  - 2 Click on 「Search」 button.

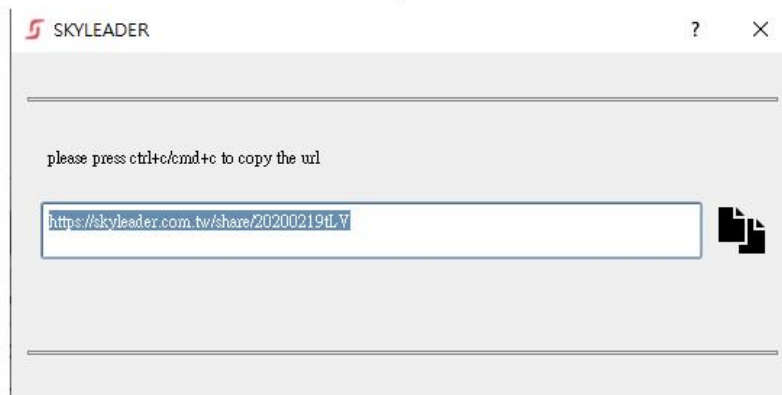


- Draw the history records
  - 1 Check the table from the show as and choose the record.
  - 2 Click on the “Draw” button and wait for the progress bar completed.
  - 3 Flight path records and analysis chart shows on the right side.
  - 4 The right side icons can switch the map and detail table.
  - 5 Track and linear graph can zoom in to full screen from right side icon.
  - 6 Hide the records, it won't show on the list.



- Share track

- 1 Click the 「share track」 button and copy the URL to share with your friends.



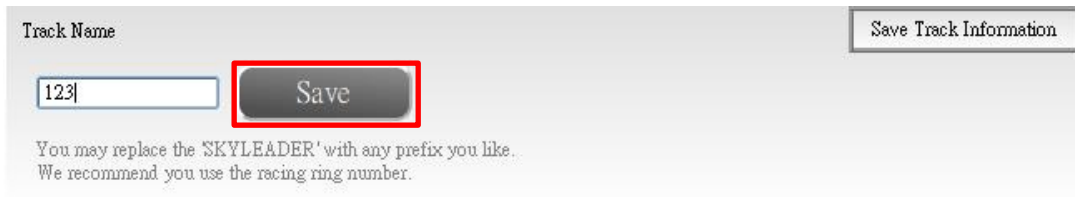
- Change the track name

- 1 In the page of Training Records
  - 1) Double click on track name and enter the name.
  - 2) Press the Enter key on the keyboard

Draw	Track Info.	Departure Time	Logging mode
<input type="checkbox"/>	33500012	2017/09/11 17:00	2HR (2S/P)
<input type="checkbox"/>	33500006	2017/09/11 17:00	2HR (2S/P)
<input type="checkbox"/>	33500022	2017/09/11 17:00	2HR (2S/P)
<input type="checkbox"/>	33500014	2017/09/11 17:00	2HR (2S/P)
<input type="checkbox"/>	22909311	2017/09/11 17:00	2HR (2S/P)
<input type="checkbox"/>	33500023	2017/09/11 17:00	2HR (2S/P)
<input type="checkbox"/>	33500004	2017/09/11 17:00	2HR (2S/P)

## 2 In the page of Time Setting

- 1) After read the record, enter the track name on the bottom left side.
- 2) Click on “Save” button.
- 3) You can find the track record in the Training Records page.



The screenshot shows a web form with a label "Track Name" at the top left. Below it is a text input field containing "123". To the right of the input field is a dark grey button with the word "Save" in white text, which is highlighted with a red rectangular border. In the top right corner of the form area, there is a button labeled "Save Track Information". Below the input field, there is a small note: "You may replace the 'SKYLEADER' with any prefix you like. We recommend you use the racing ring number."

- ! The filename cannot contain the character, for example: ( ) \ [ ] \ { } \ < >....etc. These will cause the map display error.

## V. Map selection

- Google Map: Taiwan and other countries
- Gaode map: China

## VI. Troubleshooting

- SKYLEADER website has more operation detail: <http://www.sky-leader.com/>
- If follow the website process cannot resolve the problem, please contact us: [sales@minxincorp.com](mailto:sales@minxincorp.com)